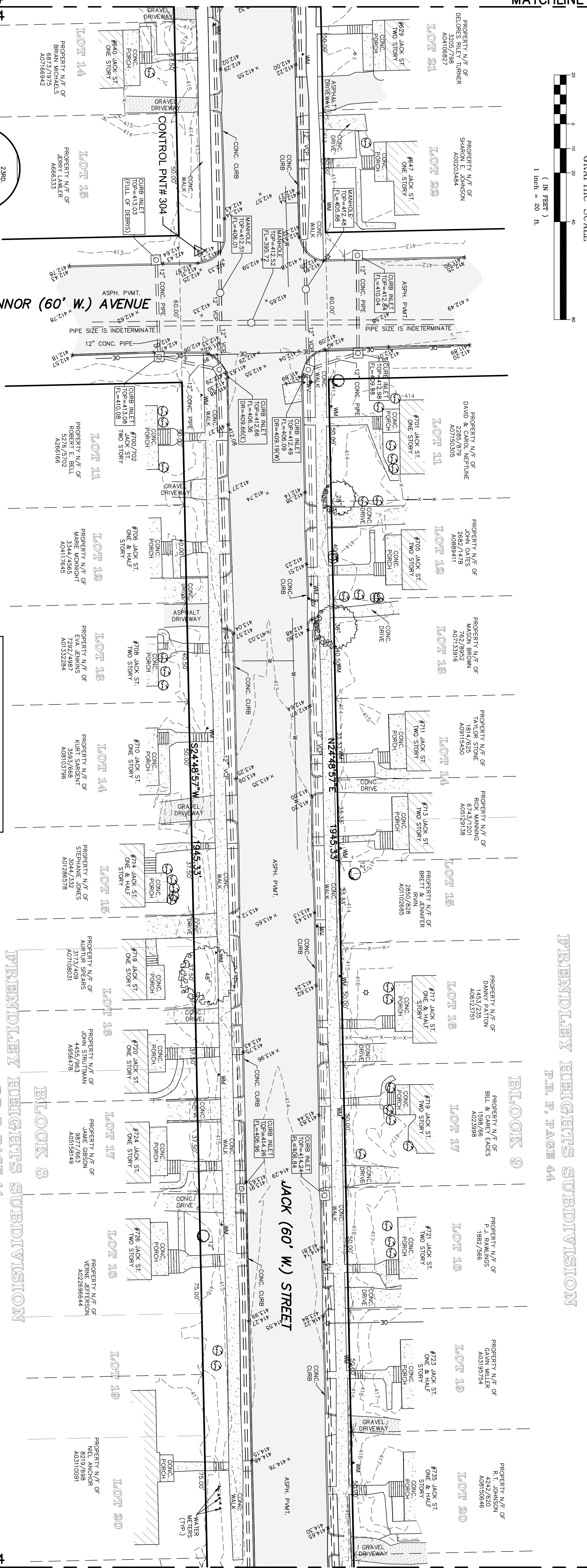
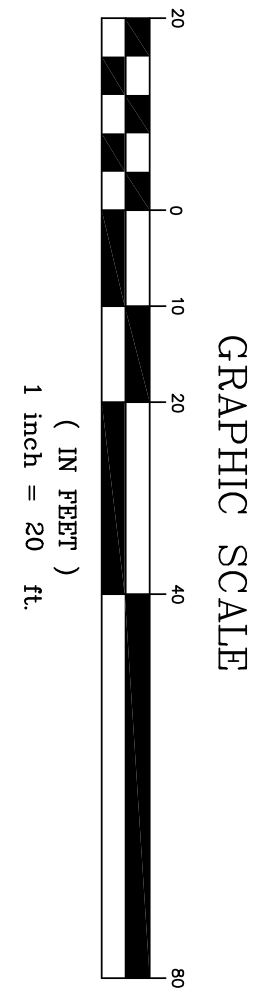
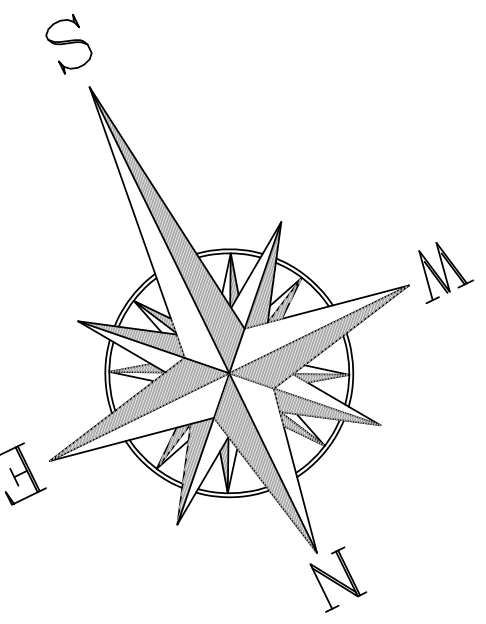
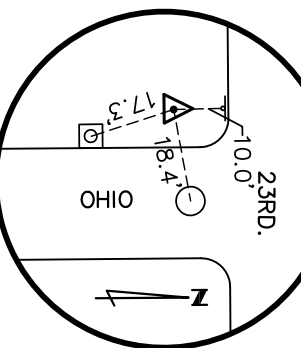


RIGHT-OF-WAY & TOPOGRAPHIC SURVEY OF  
**JACK STREET**  
 FROM IT'S INTERSECTION WITH EVERETT STREET TO IT'S  
 INTERSECTION WITH ZIMMERMANN AVENUE  
 CITY OF EAST ST. LOUIS, ILLINOIS



SHEET 1 OF 4  
 SHEET 2 OF 4

REFERENCE TIE  
 CONTROL POINT #304  
 IRON ROD W/CAP  
 N 191.9376.0740  
 E 2307.7462.7740  
 ELEV 412.66  
 NOT TO SCALE



NOTES:

- 1) The basis of the bearing system is grid north per the Illinois State Plane Coordinate System West Zone; readings were taken with a Trimble R8 GNSS GPS receiver that references the Midwest RTK Network (MWRN) (VRS). This system uses Trimble Navigation GSPNet and RTKNet software to produce model of systematic errors which significantly improves RTK accuracies for rovers working within the network. The network reference station positions and resulting coordinates are computed with respect to the NAD83 (GRS89) (EPSG:4326.000) reference frame.
- 2) Site elevations were established by readings that were taken with a Trimble R8 GNSS receiver that references the Midwest RTK Network (MWRN) (VRS). This system uses Trimble Navigation GSPNet and RTKNet software to produce model of systematic GPS errors which significantly improves RTK accuracies for rovers working within the network. The network reference station positions for rovers are computed with respect to the NAD83 (GRS89) (EPSG:4326.000) reference frame.
- 3) Title commitment has not been provided to Sabur, Inc. No easement investigation has been performed by the surveyor.

ALL UTILITY LOCATIONS ARE SHOWN PER  
 VISIBLE AT GRADE LOCATIONS ONLY.

LEGEND	
□	FOUND OLD STONE/CONC. MONUMENT
+	FOUND CROSS
○	FOUND IRON PIPE/ROD
⊙	BORING HOLE
⊙	GUY WIRE
⊙	UTILITY POLE
⊙	YARD LIGHT
⊙	STREET LIGHT
⊙	FIRE HYDRANT
⊙	WATER METER
⊙	WATER VALVE
⊙	SANITARY MANHOLE
⊙	CURB/AREA INLET
⊙	SANITARY CLEANOUT
⊙	GAS VALVE
⊙	STREET SIGN
⊙	FENCE
⊙	TRAFFIC SIGNAL
⊙	MAIL BOX
⊙	PINE TREE
⊙	TREE
⊙	BUSHES/HEADERS
⊙	TREE STUMP
⊙	BUSH
⊙	OVERHEAD ELECTRIC
⊙	WATER LINE
⊙	GAS LINE
⊙	FIBER OPTIC
⊙	UNDERGROUND ELECTRIC
⊙	EXST. STORM SEWER
⊙	EXST. SANITARY SEWER
⊙	CENTER LINE
⊙	RIGHT OF WAY
⊙	(TYP.)
⊙	CONC.
⊙	ASPH.

PRENDLEY HEIGHTS SUBDIVISION  
 P.B. P, PAGE 44

BLOCK 9

BLOCK 8

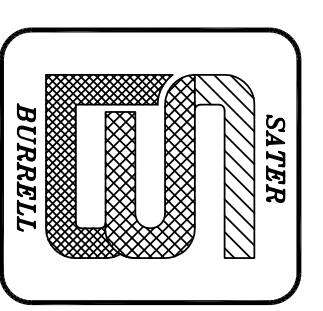
BLOCK 7

SHEET 2 OF 4  
 SHEET 3 OF 4

SURVEYOR'S STATEMENT

This is to certify that we have by the order of TPO Corporation, during the month of April 2008, surveyed a right-of-way and topographic survey of Jack Street from it's intersection with Everett Street to it's intersection with Zimmermann Avenue, in the City of East St. Louis, Illinois. This survey conforms to the Illinois minimum standards for property boundary surveys.

Diore R. Burrell  
 Illinois P.L.S. #3148



**SABUR, INC.**  
 7751 ASHBY RD. ST. LOUIS, MO. 63114  
 PHONE: (314) 428-1414 FAX: (314) 428-6082  
 www.sabur-inc.com

Checked BY: J.F.B. Date: 08-03-10  
 Drawn BY: J.F.B. Date: 5/07/2008  
 SHEET 2 OF 4