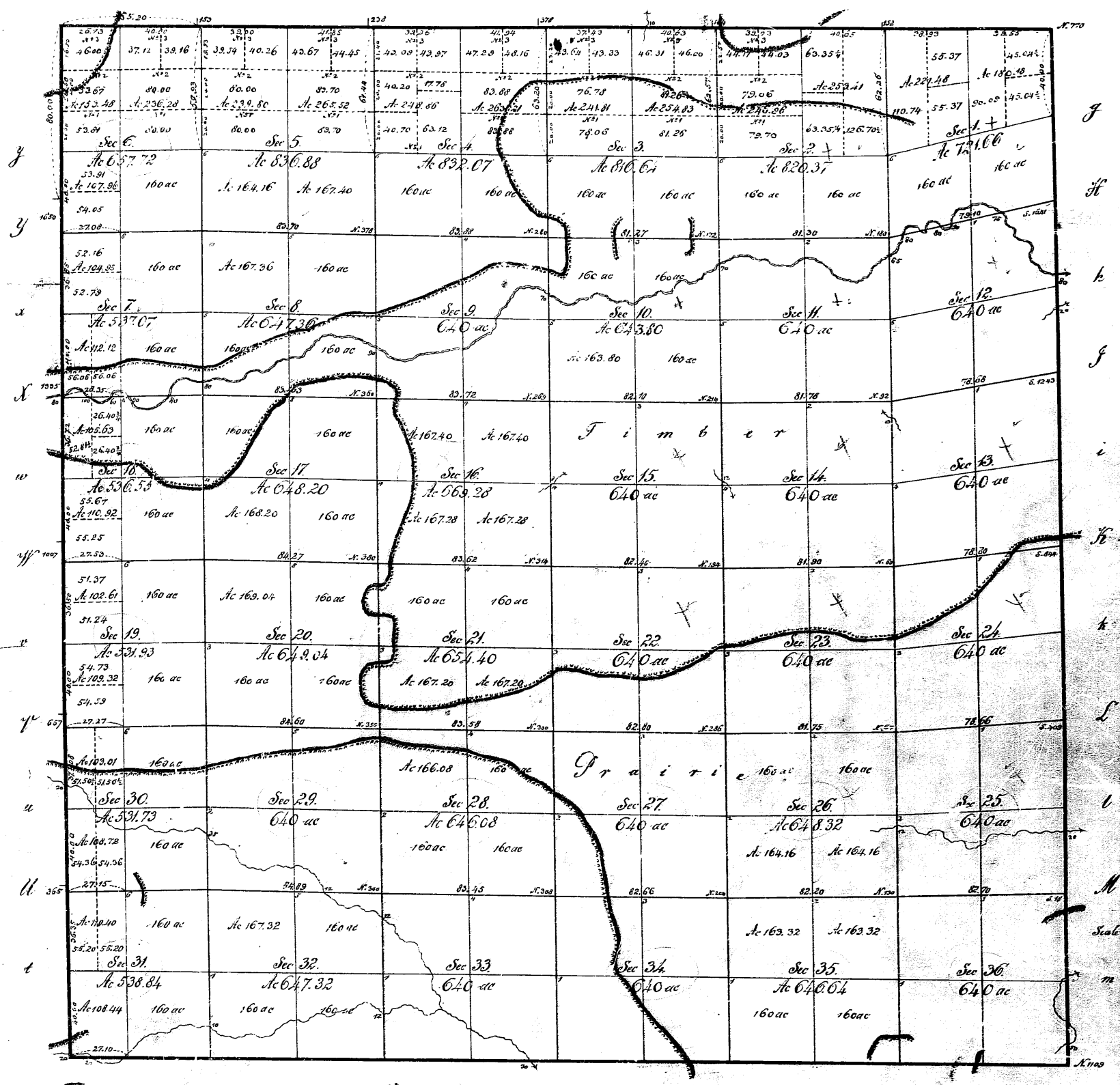


Township 50 North of the base line Range 5 West of the 5th principal Meridian

A a B b C c D d E e F f G



T s S r R y Q p J o O n N

Office of the Surveyor General
for Illinois and Missouri.
Saint Louis April 27th 1852.

Aggregate area = 23,161.90 acres

The above plat of Township 50 North of the base line Range 5 West of the 5th principal Meridian is strictly conformable to the field notes of the survey thereof on file in this office

M. Lewis Clark
Surveyor General.

A copy of this plat was sent to the
Commission on 30th May 1855.